

# DeZURIK SQUARE/RECTANGULAR KNIFE GATE VALVES

APPLICATION DATA 31.02-1  
July, 2012  
Supersedes March, 2009



**Applications:** Specialized equipment, flow bins, dryers, storage hoppers and other dry handling equipment

**Process Media:** Polyethylene pellets, fly ash, cement, sand and other dry materials

**Size Range:** 36" (900mm) maximum length or width

**Pressure Rating:** 150 psig (1035 kPa)

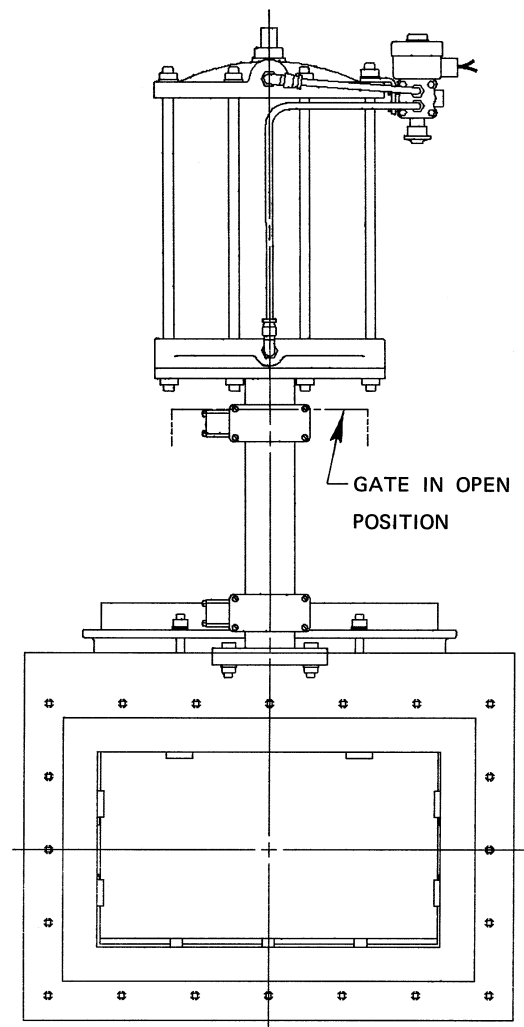
**Shutoff Class:** ASME Class II

**Body Materials:** 304 or 316 stainless steel and carbon

**Actuators:** Handwheel, cylinder, lever or electric motor

**Ordering:** For a quote/recommendation on a Square/Rectangular Knife Gate Valve, contact Application Engineering with the following information:

- Valve size
- Flange configuration and bolt pattern
- Pressure
- Shutoff pressure
- Allowable leakage rate
- Flowing media
- Actuator type
- Materials of construction
- Accessories



Typical of the many Square/Rectangular Knife Gate Valves by DeZURIK.