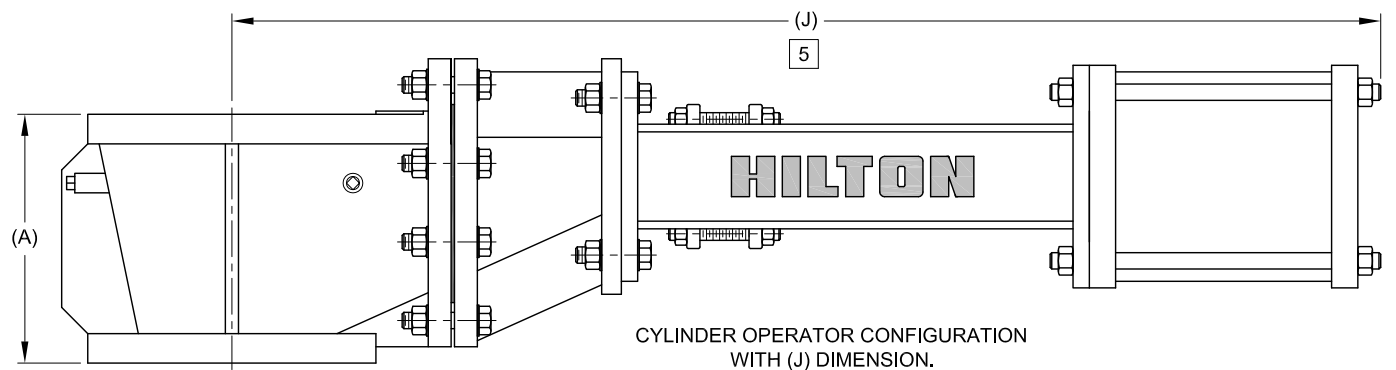
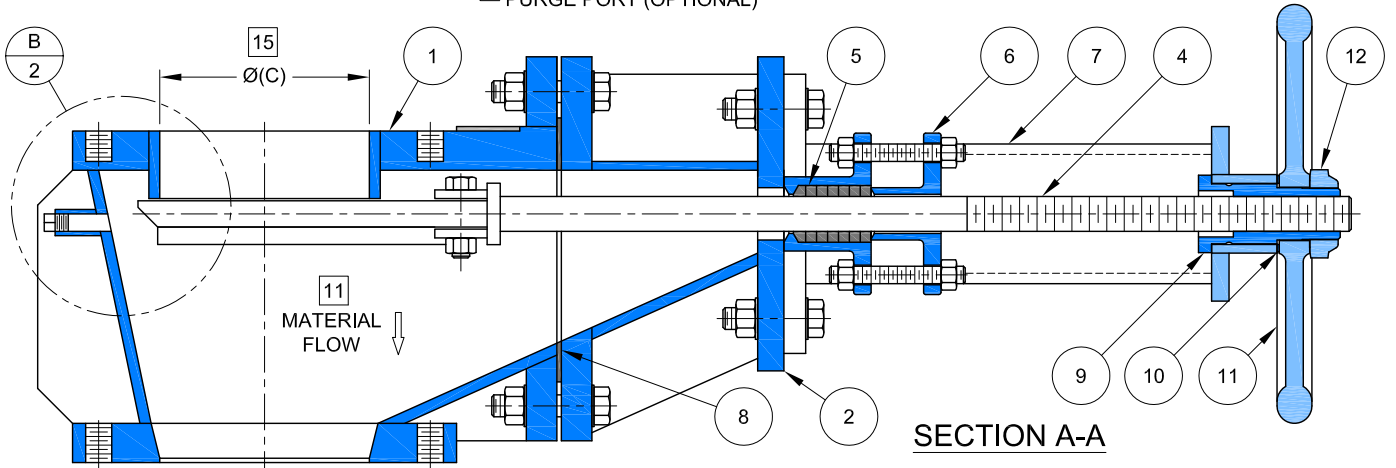
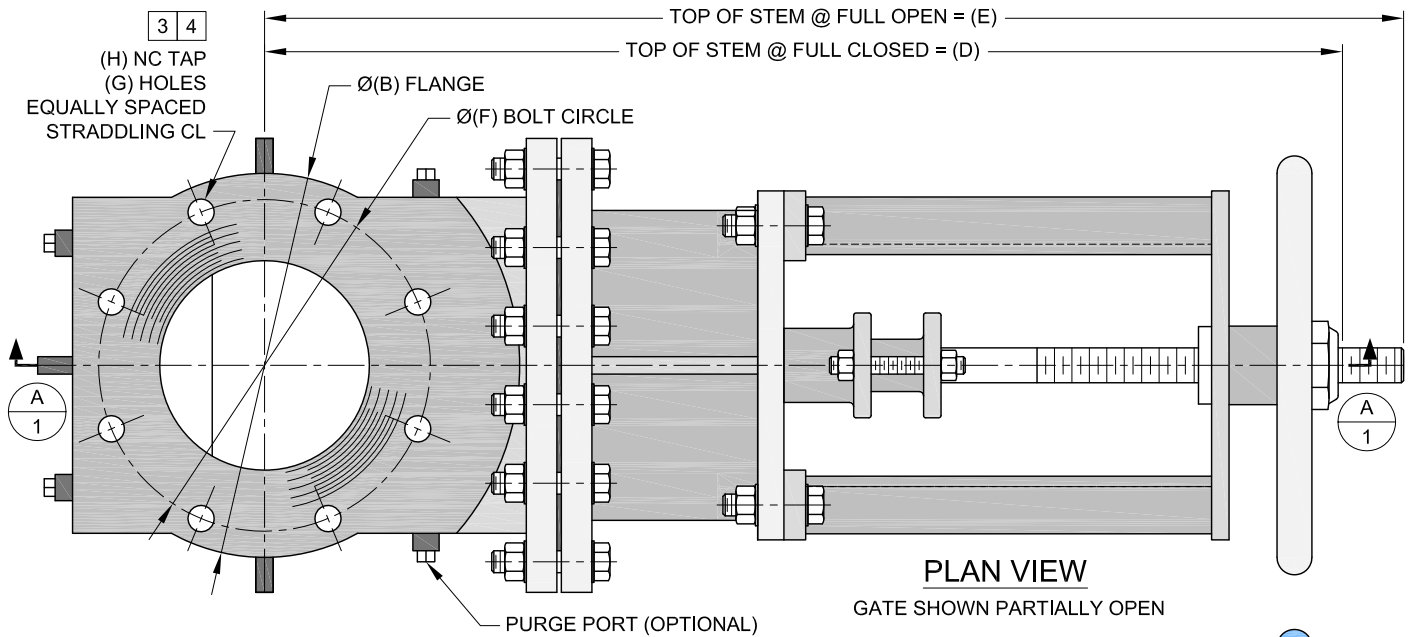


► 4" - 24" Bonneted Tapered Body Knife Gate Valve

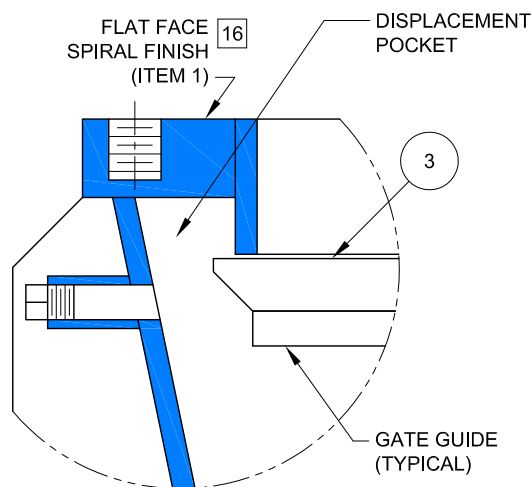


REVISED: 05 / 01 / 13

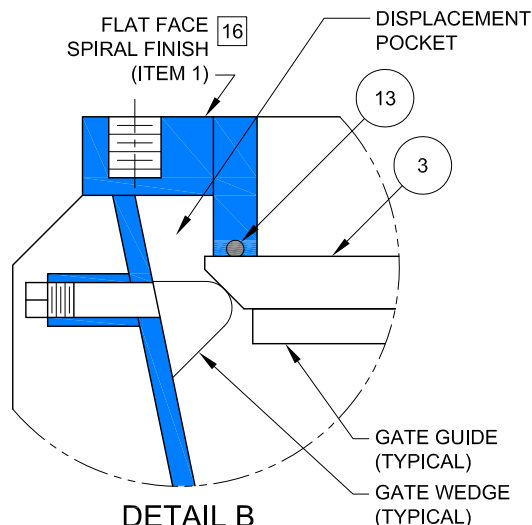
### ► 4" -24" Bonneted Tapered Body Knife Gate Valve

DIM	4"Ø	5"Ø	6"Ø	8"Ø	10"Ø	12"Ø	14"Ø	16"Ø	18"Ø	20"Ø	22"Ø	24"Ø
A	8	9	9 1/2	11	12 1/2	14	15.5	17	19	20 1/2	22	23 1/2
B	9	10	11	13 1/2	16	19	21	23 1/2	25	27 1/2	29 1/2	32
C-max	4	5	6	8	10	12	14	16	18	20	22	24
C-min	3 5/8	4 1/2	5 1/2	7 1/4	9	10 7/8	12 5/8	14 1/2	16 1/4	18	19 7/8	21 5/8
D	22	24	26	30 1/2	35	39 1/2	44 1/2	50	56	61 1/2	67	72
E	27	30	33	39 1/2	46	52 1/2	59 1/2	67	75	82 1/2	90	97
F	7 1/2	8 1/2	9 1/2	11 3/4	14 1/4	17	18 3/4	21 1/4	22 3/4	25	27 1/4	29 1/2
G	8	8	8	8	12	12	12	16	16	20	20	20
H	5/8"-11	3/4"-10	3/4"-10	3/4"-10	7/8"-9	7/8"-9	1"-8	1"-8	1 1/8"-7	1 1/8"-7	1 1/4"-7	1 1/4"-7
J	28	31	34	40 1/2	47	54 1/2	61 1/2	69	78	85 1/2	93	100
WGT	85 lb	110 lb	135 lb	215 lb	320 lb	445 lb	575 lb	735 lb	900 lb	1110 lb	1360 lb	1650 lb

ITEM	QTY	DESCRIPTION	MATERIAL
1	1	VALVE BODY	ALLOY STEEL
2	1	BONNET	ALLOY STEEL
3	1	GATE	ALLOY STEEL
4	1	STEM	ALLOY STEEL
5	1	PACKING SET	TFE/SYN FIBER
6	1	PACKING FOLLOWER	ALLOY STEEL
7	1	YOKE	CARBON STEEL
8	1	BONNET GASKET	SYNTHETIC FIBER
9	1	STEM NUT	BRONZE
10	1	THRUST WASHER	BRONZE
11	1	HANDWHEEL	DUCTILE IRON
12	1	HANDWHEEL NUT	STEEL
13	1	SEAL RING	VITON



**DETAIL B**  
H-290-B (METAL SEAT)



**DETAIL B**  
H-291-B (RESILIENT SEAT)

#### NOTES:

- DESIGN PRESSURE: 150 PSIG (CWP)
- DESIGN TEMPERATURE: 400°F
- FLANGE DRILLING PER ANSI B16.5 CLASS 150
- ALL BOLT HOLES ON INLET FLANGE ARE THREADED BLIND.
- DIMENSION (J) IS FOR REFERENCE PURPOSES ONLY. ACTUAL DIMENSION MAY VARY DEPENDING ON SIZE OF CYLINDER USED.
- LARGER SIZES ARE AVAILABLE.
- ADDITIONAL PRESSURE AND TEMPERATURE RATINGS AVAILABLE.
- ALL DIMENSIONS IN INCHES UNLESS OTHERWISE NOTED.
- DIMENSIONS ARE APPROXIMATE.
- HANDWHEEL OPERATORS ARE FURNISHED STANDARD. A WIDE VARIETY OF MANUAL AND POWERED OPERATORS ARE AVAILABLE AS SHOWN IN THE OPERATORS SECTION.
- THE H-290-B IS INHERENTLY REVERSE FLOW WITH A GUIDED GATE. GATE WEDGES MAY BE INCORPORATED DEPENDING ON SHUT-OFF REQUIREMENTS.
- TEFLON-ACRYLIC IS STANDARD PACKING MATERIAL. ADDITIONAL MATERIALS ARE AVAILABLE.
- SEAL RING IS AVAILABLE IN VITON, TEFLON, BUNA-N, NEOPRENE, POLYURETHANE, OR OTHER ELASTOMERS.
- VALVE IS SHOWN WITH SOLID ALLOY CONSTRUCTION AND IS AVAILABLE IN ANY WELDABLE ALLOY. ALSO AVAILABLE IN WETTED PARTS CONSTRUCTION.
- PORT DIAMETER EXCEEDS MSS SP-81. IF FULL PIPE INNER DIAMETER IS REQUIRED, IT SHOULD BE SPECIFIED.
- FLAT FACE FLANGES ARE AVAILABLE.
- MOST FEATURES CAN BE CUSTOMIZED AS REQUIRED. COMMON OPTIONS AND MODIFICATIONS INCLUDE SQUARE PORTS, PURGES, REMOVABLE SEATS, FACE-TO-FACE (A), LIVE LOADED PACKING, ETC.

REVISED: 05/01/13