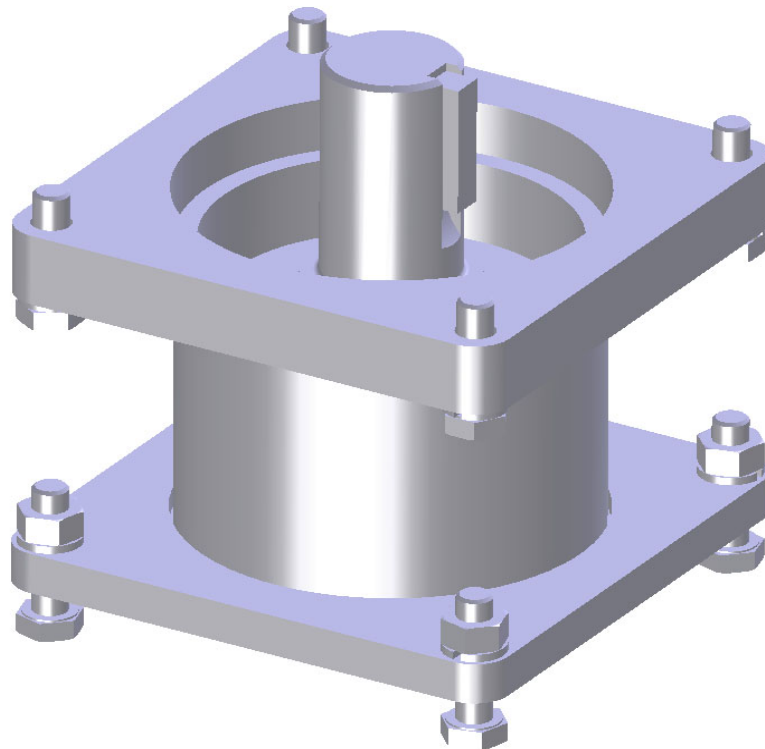




DeZURIK ENK NECK EXTENSION

USED WITH ACTUATORS ON PEF
100% PORT ECCENTRIC PLUG
VALVES



Instruction D10458

June 2011

DeZURIK

ENK Neck Extension used with Actuators on
PEF 100% Port Eccentric Plug Valves

Instructions

These instructions provide information about the ENK Neck Extension. They are for use by personnel who are responsible for installation, operation and maintenance of ENK Neck Extension.

Safety Messages

All safety messages in the instructions are flagged with an exclamation symbol and the word Caution, Warning or Danger. These messages indicate procedures that must be followed exactly to avoid equipment damage, personal injury or death.

Safety label(s) on the product indicate hazards that can cause equipment damage, personal injury or death. If a safety label becomes difficult to see or read, or if a label has been removed, please contact DeZURIK for replacement label(s).



WARNING!

Personnel involved in the installation or maintenance of valves should be constantly alert to potential emission of pipeline material and take appropriate safety precautions. Always wear suitable protection when dealing with hazardous pipeline materials. Handle valves, which have been removed from service with suitable protection for any potential pipeline material in the valve.

Inspection

Your ENK Neck Extension has been packaged to provide protection during shipment, however, it can be damaged in transport. Carefully inspect the unit for damage upon arrival and file a claim with the carrier if damage is apparent.

Parts

Recommended spare parts are listed on the assembly drawing. These parts should be stocked to minimize downtime.

Order parts from your DeZURIK sales representative, or directly from DeZURIK. When ordering parts, please include the 7-digit part number and 4-digit revision number (example: **9999999R000**) located on the data plate attached to the valve assembly. Also include the part name, the assembly drawing number, the balloon number and the quantity stated on the assembly drawing.

DeZURIK Service

DeZURIK service personnel are available to install, maintain and repair all DeZURIK products. DeZURIK also offers customized training programs and consultation services.

For more information, contact your local DeZURIK sales representative or visit our website at www.dezurik.com.

Table of Contents

Description	4
Disassembly	5
<i>To remove the actuator from the extension</i>	5
<i>To remove the extension from 3"-12" and 24"-36"</i>	5
<i>To remove the extension from 14"-20" valves</i>	5
Reassembly	6
<i>To replace the extension on 3"-12" and 24"-36" valves</i>	6
<i>To replace the extension on 14"-20" valves</i>	6
<i>To replace the actuator on the extension</i>	7

DeZURIK

ENK Neck Extension used with Actuators on PEF 100% Port Eccentric Plug Valves

Description

The ENK Neck Extension is located between the valve adaptor and the valve actuator, and is used to extend the distance from the valve to the actuator. The actuator consists of a stationary outer extension and a rotating inner extension. The outer extension mounts the actuator to the valve; the inner extension is a drive shaft to transmit the torque from the actuator to the valve adaptor. This document provides instructions for the extension used with DeZURIK actuators on PEF 100% Port Eccentric Plug Valves.

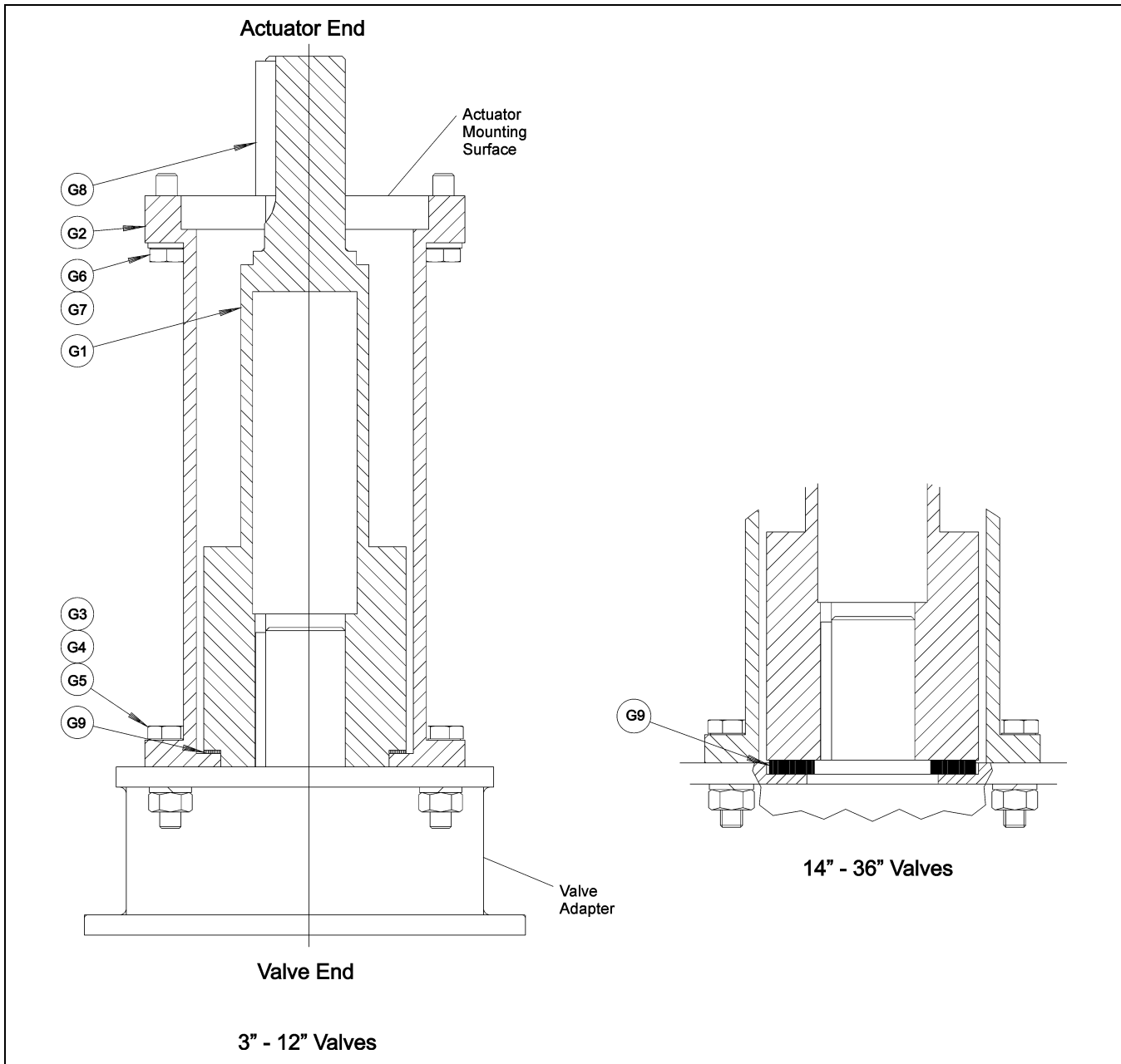


Figure 1—Parts Identification

Disassembly

See Figure 1 for parts identification.

Discontinue flow and relieve pipeline pressure.



WARNING!

Flow in the pipeline with the extension or actuator removed can allow the valve to slam closed and cause personal injury and/or damage to the flow system. Shut down the flow in the pipeline before removing the extension or actuator.

To remove the actuator from the extension:

1. Remove the screws (G6) and lockwashers (G7) that mount the actuator to the outer extension (G2), and lift the actuator from the outer extension.

Note the orientation of the actuator gear with respect to the extension drive shaft.

To remove the extension from 3" - 12" valves:

1. Remove the mounting screws (G3), lockwashers (G4) and nuts (G5) that mount the outer extension (G2) to the valve adaptor, and lift the outer and inner extensions from the valve and adaptor.
2. Remove the inner extension (G1) and thrust bearing (G9) from the valve and adaptor.

To remove the extension from 14" - 36" valves:

1. Remove the mounting screws (G3), lockwashers (G4) and nuts (G5) that mount the outer extension to the valve, and lift the outer extension and actuator from the valve.
2. Remove the inner extension (G1) from the valve.

DeZURIK

ENK Neck Extension used with Actuators on PEF 100% Port Eccentric Plug Valves

Reassembly

See Figure 1 for parts identification.

To replace the extension on 3" - 12" valves:

1. Before reassembly, remove old sealant from all mating mounting surfaces.
2. Apply a paint-like coating of Never-Seez (1029050) to both sides of the thrust bearing (G9).
3. Slide the thrust bearing (G9) onto the valve end of the inner extension (G1).
4. Apply a paint-like coating of Never-Seez (1029050) to the outside diameter (valve end only) of the inner extension (G1).
5. Insert the inner extension (G1) into the outer extension (G2).
6. Apply a thin bead of silicone sealant DOW RTV-732 (1055515) to the valve end of the outer extension (G2) mounting surface.

Note: Apply the sealant between the inside diameter and the mounting hole pattern.

7. Align the keyways of the valve stem and inner extension and slide the inner extension onto the valve stem.
8. Mount the outer extension (G2) to the valve adaptor with the screws (G3), lockwashers (G4) and nuts (G5) and tighten screws and nuts.

To replace the extension on 14" - 36" valves:

1. Before reassembly, remove old sealant from all mating mounting surfaces.
2. Apply a paint-like coating of Never-Seez (1029050) to both sides of the thrust bearing (G9).
3. Place the thrust bearing (G9) in adaptor counter bore (P1).
4. Align the keyways of the valve stem and inner extension (G1) and slide the inner extension onto the valve stem.
5. Apply a thin bead of silicone sealant DOW RTV-732 (1055515) to the valve end of the outer extension (G2) mounting surface.

Note: Apply the sealant between the inside diameter and the mounting hole pattern.

6. Slide the outer extension (G2) over the inner extension (G1) and mount the outer extension to the valve adaptor with screws (G3), lockwashers (G4) and nuts (G5) and tighten screws and nuts.

Reassembly *(Continued)***To replace the actuator on the extension:**

1. Place the actuator on the outer extension (G2), and engage the key (G8)/inner extension (G1) with the actuator gear so that the open and closed positions of the actuator match the open and closed positions of the valve.
2. Mount the actuator to the extension with screws (G6) and lockwashers (G7), and tighten the screws.
3. After inner extension (G1) is mounted, and shaft key (G8) is assembled in keyseat, secure shaft key by staking with a centerpunch on the end of the shaft. Stake on both sides of the shaft as shown in Figure 2.

Note: Do not deform the outside diameter of the shaft.

4. After unit is assembled, adjust the actuator open & closed stops.

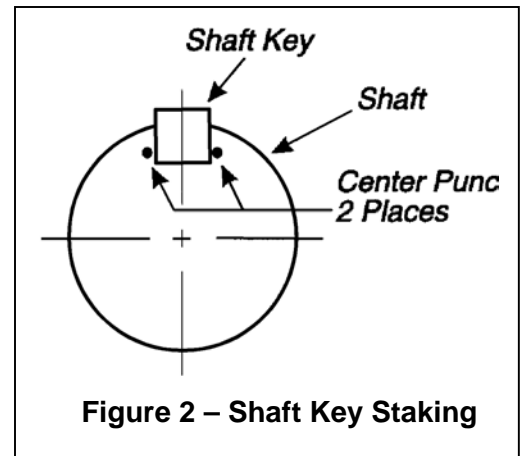


Figure 2 – Shaft Key Staking