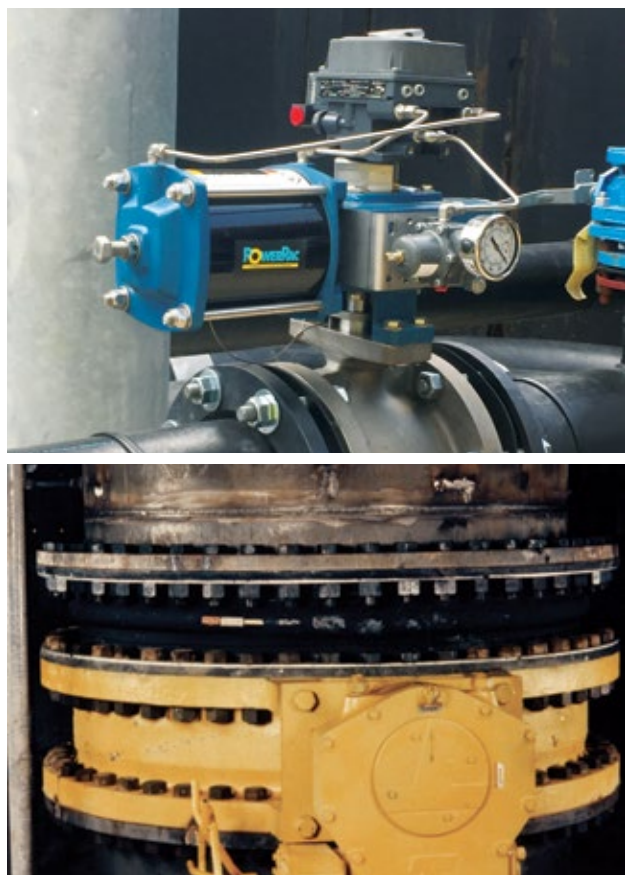




## VALVE SOLUTIONS FOR POWER INDUSTRY APPLICATIONS







DeZURIK KSL Slurry Knife Gate Valves equipped with optional gate guards on a FGD return water system.

## The DeZURIK Difference

Throughout our 250 years of combined history, DeZURIK, APCO, and HILTON have been recognized worldwide for collaborating with customers to design and engineer valves that provide superior performance and value. Each company was founded by an innovator who set out to solve a customer's problem application. Today, the DeZURIK, APCO, and HILTON brands continue the tradition of partnering with our customers in the power industry to provide the newest innovations in gate, plug, butterfly, check, air and rotary control valves.



DeZURIK AWWA Butterfly Valves with neck extensions and electric motor actuators isolate water to the condenser.





A DeZURIK VPB V-Port Ball Valve with PowerRac Actuator and positioner provides accurate control on a recycle water service.

### **Full-Featured Valves for Today's Power Plants**

DeZURIK valves are successfully applied in coal-fired, natural gas, hydropower and biomass plants handling a wide variety of media including water, slurries, ash and chemicals. Valve designs include features for superior performance, reliability and efficiency such as 100% port areas for high flow capacity, premium packing systems with metallic scraper rings for long service life and full-force lockouts for safety. In addition, our expertise in materials engineering allows us to assist with selecting the proper metals, elastomers and hardened trim materials for longest service life and maximum value.

### **Ruggedly Designed for Maximum Value**

DeZURIK engineers spend many hours in the field listening to customers to fully understand the intricacies of each application and incorporate that knowledge into the valves we design. Using the latest advancements in technology such as Solid Modeling, Finite Element Analysis, 3D Rapid Prototyping and Computational Fluid Dynamics, DeZURIK engineers create valves that offer superior installed performance.



DeZURIK AWWA Butterfly Valves isolate intake feedwater in the pump house.



DeZURIK KCI Coal Burner Isolation Valves are designed specifically for isolation of pulverized coal burner lines on coal-fired boilers.



Two DeZURIK 8" KSL Slurry Knife Gate Valves installed on a gypsum discharge service.

### **Quality Centered Manufacturing**

DeZURIK's dedication to quality is exemplified in all aspects of the business but foremost in our manufacturing capabilities. Our state-of-the-art CNC machining centers and large valve fabrication facilities allow us to produce in excess of 120,000 valves annually that range in size from 1/2" to 144" and weigh up to 40 tons.

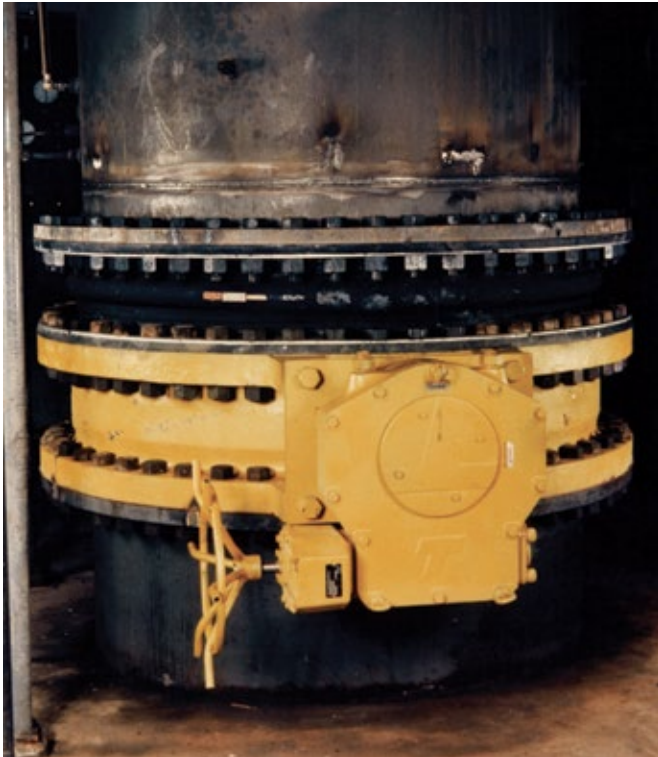
### **Standard 2-Year Manufacturer's Warranty**

DeZURIK's dedication to outstanding practices is ingrained in our culture and exemplified in our quality system. DeZURIK has been certified to the ISO 9001 standard since 1996. To further demonstrate our confidence in our product quality, DeZURIK offers a 2-Year Manufacturer's Warranty as standard - double the length of time offered by most other manufacturers.



## Application Expertise You Can Trust

The application expertise of DeZURIK technical sales representatives, located throughout the world, ensure personalized and complete service to keep processes performing at optimum levels. A network of independent representatives are backed by over 500 DeZURIK employees at our factories, service centers and offices whose primary goal is customer satisfaction and maintaining long-term relationships.



DeZURIK AWWA Butterfly Valves, in sizes to 144", can be used in water intake systems, water treatment and cooling water applications.

## Wide Selection of Valve Styles

DeZURIK has valve styles to meet the application requirements of the power industry. DeZURIK manufactures valves for on/off, throttling, diverting, air relief, air/vacuum, vacuum relief/air inlet, foot valves, surge relief and check valve services. The selection charts on the following pages serve as a starting point in the valve selection process. For additional information or to contact your local representative, visit us at [www.dezurik.com](http://www.dezurik.com)



This Hilton 42" Bonneted Knife Gate Valve is installed at a Geothermal plant in the Western United States.



---

## DeZURIK KGC Knife Gate Valves

**SIZE RANGE:** 2-48" (50-1200mm)

**PRESSURE RATING:** 150 psi CWP (1030 kPa) or 100 psi CWP (690 kPa)

**TEMPERATURE RANGE:** to 1000°F (540°C)

**SEATING:** Metal or resilient, unidirectional or bi-directional

**BODY MATERIAL:** 304, 316, 317, 254-SMO, 2205 duplex stainless steel, Hastelloy C 276

- Material handling isolation
- Fly ash removal
- Bottom ash removal
- Floor drains



---

## DeZURIK KSL Slurry Knife Gate Valves

**SIZE RANGE:** 2-24" (50-600mm);  
sizes to 60" (1500mm) on application

**PRESSURE RATING:** 100 psi CWP (690 kPa); higher pressures available with optional gate materials

**TEMPERATURE RANGE:** to 300°F (149°C)

**SEATING:** Resilient Sleeve

**BODY MATERIAL:** Ductile iron, carbon steel and various stainless steel or higher alloys

- Scrubber slurry handling
- Limestone slurry
- Gypsum slurry



---

## DeZURIK KUL Urethane Lined Knife Gate Valves

**SIZE RANGE:** 2-48" (50-1200mm)

**PRESSURE RATING:** 150 psi CWP (1030 kPa) or 250 psi CWP (1720 kPa)

**TEMPERATURE RANGE:** -20 to 265° F (-29 to 130°C)

**BODY MATERIAL:** Ductile iron with a variety of urethane options

- Fly ash removal
- Scrubber slurry handling
- Bottom ash removal



---

## DeZURIK KCI Coal Burner Isolation Valves

**SIZE RANGE:** 6-24" (150-600mm)

**PRESSURE RATING:** 150 psi CWP (1030 kPa); meets NFPA 85 Chapter 9.4

**TEMPERATURE RANGE:** To 1000°F (540°C)

**SEATING:** Metal Seated

**BODY MATERIAL:** 304 and 316 stainless steel, carbon steel

- Coal burner isolation



## DeZURIK Severe Service Knife Gate Valves

**SIZE RANGE:** 3-60" (50-1500mm)

**PRESSURE RATING:** to 740 psi (5100 kPa)

**TEMPERATURE RANGE:** to 450°F (232°C)

**ASME CLASS RATING:** 150, 300

**SEATING:** Metal or Resilient

**BODY MATERIAL:** Carbon Steel, 316 stainless steel, 2205 duplex stainless steel, low temperature carbon steel

- High pressure slurry
- High pressure abrasives



## HILTON Bonneted Knife Gate Valves

**SIZE RANGE:** Through 144"

**PRESSURE RATING:** 2-24" (50-600mm) = 150 psi CWP (1030 kPa);  
30-96" (750-2400mm) = 50 psi CWP (340 kPa);  
Custom designs up to 400 psi (2800 kPa)

**TEMPERATURE RANGE:** to 400°F (204°C); Custom designs -40 to 2000°F (-40 to 1093°C)

**SEATING:** Metal or Resilient, unidirectional or bi-directional

**BODY MATERIAL:** Carbon steel or 304 stainless steel. Custom designs available with solid or wetted parts construction in any weldable alloy.

- Fly ash hopper isolation
- Bottom ash removal systems
- Scrubber slurry handling



## DeZURIK BAW AWWA Butterfly Valves

**SIZE RANGE:** 3-144" (80-3600mm)

**PRESSURE RATING:** to 250 psi CWP (1700 kPa)

**TEMPERATURE RANGE:** to 290°F (143°C)

**SEATING:** Resilient

**BODY MATERIAL:** Cast iron, ductile iron

- Intake water systems
- Water treatment
- Cooling water



## DeZURIK PEC/PEF Eccentric Plug Valves

**SIZE RANGE:** .5- 2" (15-1800mm)

**PRESSURE RATING:**

**Cast Iron:**

.5-12" = 175 psi (15-300mm = 1210 kPa)

14-72" = 150 psi (350-1800mm = 1035 kPa)

**Ductile Iron:**

.5-12" = 285 psi (15-300mm = 1965 kPa)

14-72" = 250 psi (350-1800mm = 1724 kPa)

**Special:**

450 psi (3100 kPa)

**TEMPERATURE RANGE:** to 300°F (150°C)

**SEATING:** Metal or Resilient

**BODY MATERIAL:** Cast iron, ductile iron, bronze, aluminum, carbon steel, stainless steel, Alloy 20, and Monel. Optional rubber lined bodies.

- Intake water systems
- Water treatment
- Floor drains
- Chemical services
- Bottom ash removal
- Scrubber slurry handling
- Limestone slurry
- Gypsum slurry



## DeZURIK BOS Resilient Seated Butterfly Valves

**SIZE RANGE:** 2-20" (50-500mm)

**PRESSURE RATING:** to 275 psi (1890 kPa)

**TEMPERATURE RANGE:** to 250°F (121°C)

**BODY MATERIAL:** Ductile iron, cast iron

- Intake water systems
- Water treatment
- Heater drain systems
- Chemical services
- Combustion air



## DeZURIK High Performance Butterfly Valves

**SIZE RANGE:** 2-60" (50-1500mm)

**PRESSURE RATING:** to 740 psi (5100 kPa)

**TEMPERATURE RANGE:** to 700°F (370°C). On application, -320°F (-196°C) to 1000°F (540°C)

**ASME CLASS RATING:** 150, 300

**SEATING:** Metal or Resilient

**BODY MATERIAL:** 316 and 317 stainless steel, carbon steel

- Intake water systems
- Water treatment
- Floor drains
- Condensate water piping & polishing
- Heater drain systems
- Cooling water systems
- Chemical services






---

## DeZURIK RCV or VPB Rotary Control Valves

**SIZE RANGE:** RCV 1-12" (25-300mm); VPB 1-20" (25-500mm)

**PRESSURE RATING:** to 740 psi (5100 kPa)

**TEMPERATURE RANGE:** to 1000°F (540°C)

**ASME CLASS RATING:** 150, 300

**SEATING:** Metal or Resilient

**BODY MATERIAL:** 316 and 317 stainless steel, carbon steel, Hastelloy C, Titanium

- Steam control
- Air systems
- Chemical services
- Feedwater




---

## Willamette Metal Seated Ball Valves

**SIZE RANGE:** 6-54" (150-1400mm)

**PRESSURE RATING:** to 300 psig (2068 kPa); to 400 psig (2748 kPa) on application

**BODY MATERIAL:** Ductile iron

- Pump start/stop
- Flow discharge control




---

## Willamette Metal Seated Cone Valves

**SIZE RANGE:** 6-60"

**PRESSURE RATING:** to 740 psi CWP

**BODY MATERIAL:** Cast iron, ductile iron

- Pump start/stop
- Flow discharge control




---

## APCO Air Release, Air/Vacuum & Combination Air Valves

**SIZE RANGE:** .5-24" (15-600mm)

**PRESSURE RATING:** to 740 psi CWP

**BODY MATERIAL:** Cast iron, ductile iron, carbon steel, stainless steel

- Water pumping stations
- Fluid transport piping




---

## APCO CVS Check Valves

**SIZE RANGE:** 2-66" (50-1700mm)

**PRESSURE RATING:** to 250 psi CWP

**BODY MATERIAL:** Cast Iron, Ductile Iron

**CLOSURE DEVICES:** Lever & spring, lever & weight, air cushion cylinder, oil-controlled bottom-mounted buffer

- Water pumping stations

# Facilities



DeZURIK Corporate Headquarters and Manufacturing Facility,  
Sartell, MN USA  
Established in 1928, 420,000 sq. ft.



DeZURIK Cambridge, Ontario, Canada  
Established in 1961, 50,000 sq. ft.



Rapid Fulfillment Center, Houston, TX, USA  
Established in 2018, 43,000 sq. ft.



DeZURIK, Redmond, WA, USA  
Established in 1952, 25,000 sq. ft.

## Sales and Service

For information about our worldwide locations, approvals, certifications and local representative:

Web Site: [www.dezurik.com](http://www.dezurik.com) E-Mail: [info@dezurik.com](mailto:info@dezurik.com)



250 Riverside Ave. N. Sartell, Minnesota 56377 • Phone: 320-259-2000 • Fax: 320-259-2227

*DeZURIK, Inc. reserves the right to incorporate our latest design and material changes without notice or obligation. Design features, materials of construction and dimensional data, as described in this bulletin, are provided for your information only and should not be relied upon unless confirmed in writing by DeZURIK, Inc. Certified drawings are available upon request.*