



DeZURIK Valves for Carbon Capture Processes

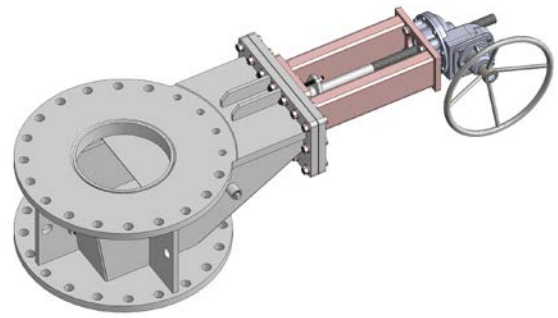
Application Market: Carbon Capture Facilities: Direct Air Capture (DAC), Carbon Capture Sequestration or Storage (CCS), Carbon Capture (CC), Direct Air Capture and Use (DACU), Direct Air Capture and Carbon Storage or Sequestration (DACCS).

Valve Applications Within the Process: pellet dryers, pellet feed systems, calciner discharge, pellet dryer pre-heaters, pellet cyclones, lime coolers, fluoseal chutes, make-up water, on-off and modulating applications.

DeZURIK Valve Styles: High temperature, custom engineered HILTON knife gate valves, Red Valve 5200 slurry handling pinch control valves, DeZURIK PEC & PEF eccentric plug valves, DeZURIK BHP high performance butterfly valves and BAW AWWA C504 compliant large bore water management butterfly valves.



HILTON H-290-B can manage the on-off flow control requirements in calciners, pellet dryers and discharge applications up to 2000°F (1093°C). Hilton's unique ability to design, engineer and fabricate dry material handling, standing column valves for extreme temperatures is a natural fit for carbon capture processes.



Red Valve 5200 & DeZURIK PECs are specifically designed to manage difficult slurry applications, high or low density and entrained solids such as pellet cyclone applications. Both designs adapt well to either manual operation or modulating service with excellent flow characteristics across the entire stroke range.



DeZURIK's BHP & BAW Butterfly Valves are suitable for make-up process water and large volume raw water intake applications. The BHP High Performance Butterfly is available in ASME Class 150 or 300. The BHP provides tight shutoff in either on-off or modulating service. The BAW is DeZURIK's large bore AWWA C504 compliant valve and is available to 168" (4200mm).



SALES AND SERVICE

For more information, contact DeZURIK

DeZURIK.com

info@dezurik.com

250 Riverside Ave. N.
Sartell, Minnesota 56377

Phone: 320-259-2000



DeZURIK, Inc. reserves the right to incorporate our latest design and material changes without notice or obligation. Design features, materials of construction and dimensional data, as described in this bulletin, are provided for your information only and should not be relied upon unless confirmed in writing by DeZURIK, Inc. Certified drawings are available upon request.