



## DeZURIK Valves for Coal Fired Utility Applications

**Application market:** Coal Fired Utilities

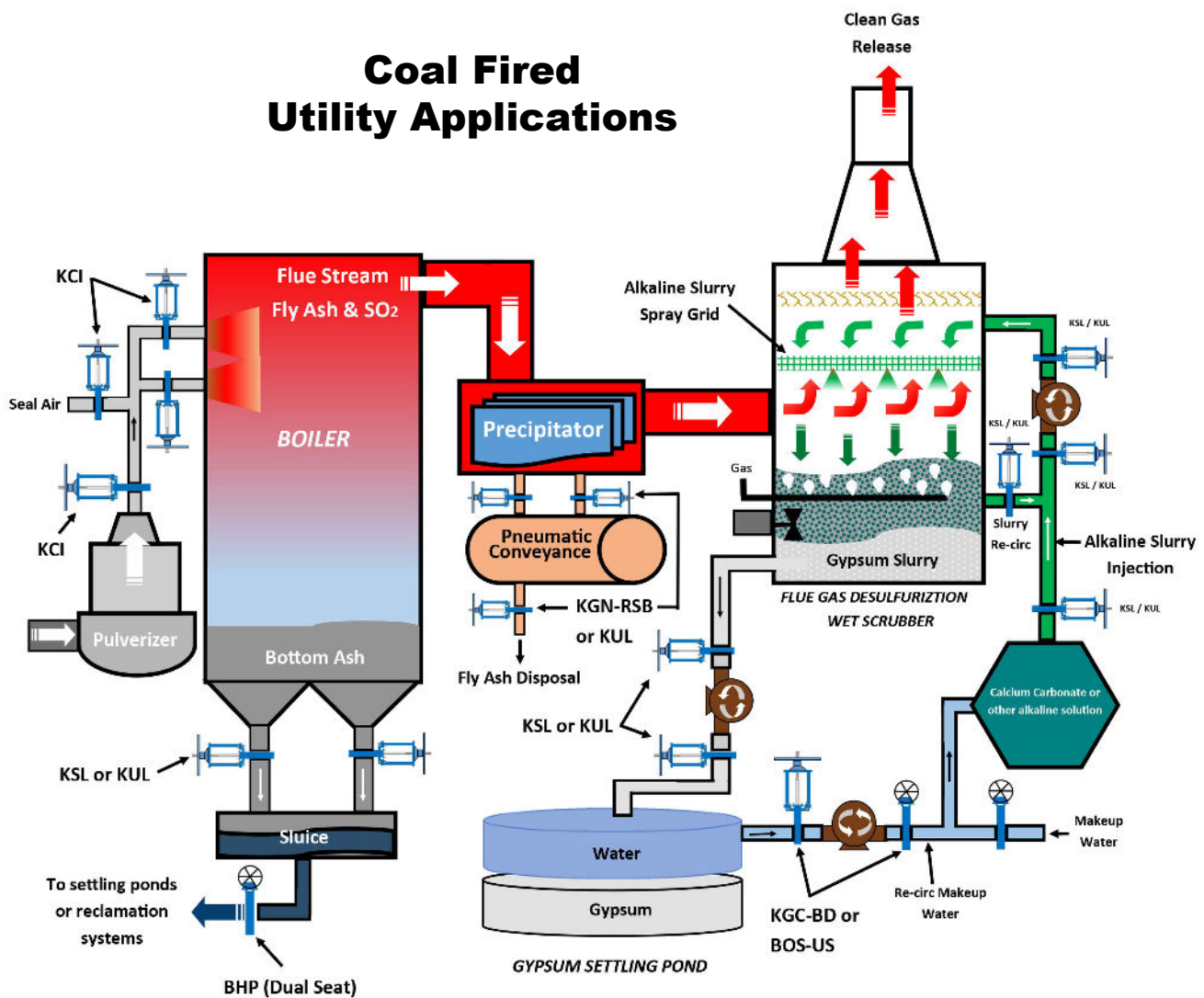
**Unit Application:** Flue gas desulfurization wet scrubbers, boiler, precipitator, pneumatic conveyance

**Valve Applications Within the System:** Gypsum bed isolation, alkaline slurry grid isolation, gypsum and alkaline pump isolation, fly ash and bottom ash handling, coal burner isolation, re-circ and makeup water

**DeZURIK Valve Styles:** KUL, KSL, KGC-BD Knife Gate Valves, BOS-US Resilient Seated Butterfly Valves, BHP High Performance Butterfly Valves  
Multiple body, gate and disc edge material options available for abrasive slurry service



# Coal Fired Utility Applications



## DeZURIK Advantages in coal fired utility applications:

### DeZURIK KSL Slurry Knife Gate Valves

- Field replaceable sleeves
- Full port, bi-directional bubble-tight shutoff

### DeZURIK KGC-BD Bi-Directional Knife Gate Valves

- Patented perimeter seat design
- Bi-directional, bubble-tight shutoff

### DeZURIK KUL Urethane Lined Knife Gate Valves

- One-piece, cast-in-place bonded liner
- All wetted surfaces are lined including body, chest, packing chamber and flange face area
- No discharge to environment
- Full port area, bi-directional, bubble-tight shutoff
- Slurry valve face-to-face options

### DeZURIK KCI Coal Burner Isolation Knife Gate Valves

- Exceeds 1997 NFPA 8503, Article 2-6.1 50 psi (344 kPa) internal explosion pressure requirements
- Removable and adjustable hard-faced seat ring

### DeZURIK BOS-US Uninterrupted Seat Resilient-Seated Butterfly Valves

- Bonded seat-body for seal durability
- Rugged splined disc-to-shaft connection for enhanced durability

### DeZURIK BHP High Performance Butterfly Valves

- Offset design for reduced sealing friction and repeatable sealing
- Tested "leak-free" for over 1,000,000 cycles

For assistance with your coal fired utilities application, please email us at [info@dezurik.com](mailto:info@dezurik.com)